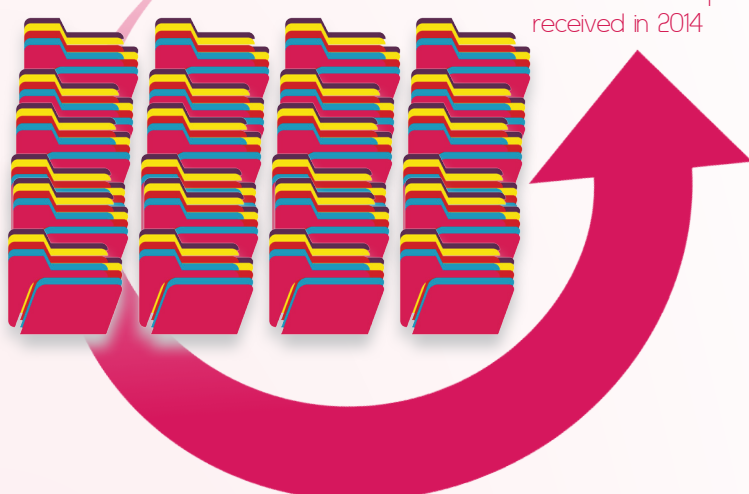


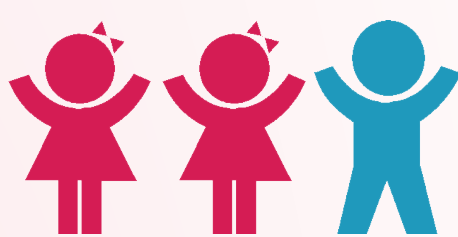
The 116 Freephone Helpline in 2015

Compiled using data and statistics from Childline Zimbabwe 116 Freephone Helpline

12,068 child abuse and child welfare case reports; 43.8% increase from reports received in 2014

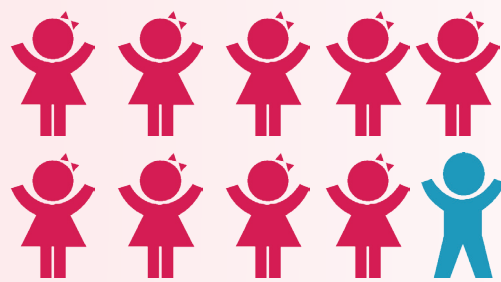


Protecting Children is EVERYONE'S responsibility. You can save a life. Report Abuse. 116 Freephone 24/7/365

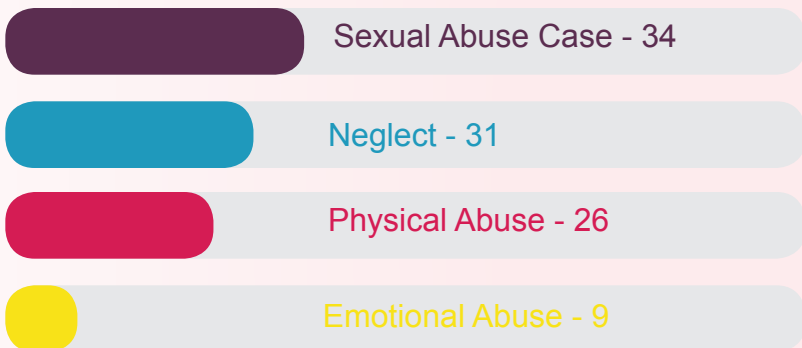


Around 2 in 3 (65%) reports received were about girls. Reports of abuse received about girls have remained consistently higher than those received about boys over the years.

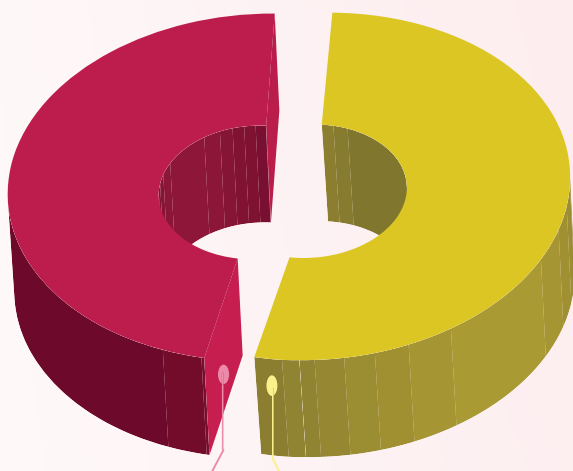
Of all reports of sexual abuse received, 91% were about girls and 9% about boys



In every 100 cases reported:

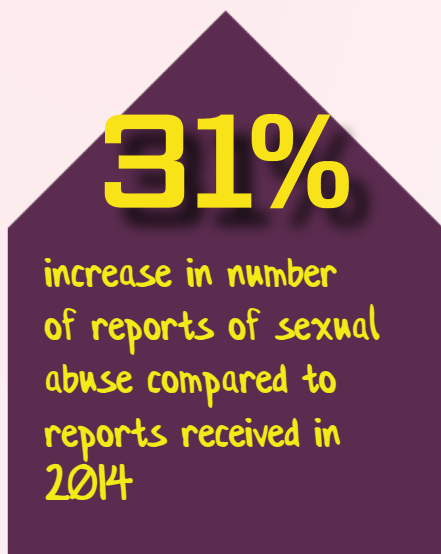


Most common forms of abuse affecting girls and boys were sexual abuse and neglect respectively



53% of all reports received in 2015 are **CHILD ABUSE**

47% of all reports received in 2015 were about the **WELFARE** of the child



The highest number of reports of Sexual Abuse 42%



Physical Abuse 25%



Emotional Abuse 37%



Neglect 28%



were in relation to children aged 13 - 15 years

Physical abuse is the most commonly reported form of abuse concerning children aged 7-9 yrs

Neglect is the most commonly reported form of abuse concerning children aged 0 - 6 yrs and 10 - 12 yrs

Reports of sexual abuse are more common among older age groups (13+ yrs) than younger ones

Childline Zimbabwe is a child rights, not-for-profit, registered Private Voluntary Organisation (PVO 7/2001). Children (0-18years), access services in Zimbabwe regardless of religious background, socio-economic circumstances or geographic location. Childline employs a rights-based approach throughout its activities addressing sexual and gender-based violence, sexual and reproductive health issues given the nature of child abuse and its prevalence in Zimbabwe. It seeks to provide children, families and those involved with children, preventative, educational, therapeutic and rehabilitation services in addition to research and advocacy.

